



SY-NC Project – Overview

1. Introducing the SY-NC project.
 2. Introducing SY-NC Empowerment Fund and Area Hubs.
 3. SY-NC Context and Approach.
 4. Timescales.
 5. Research model.
-

1. Introducing the SY-NC Project

The SY-NC project aims to develop skills and capacity through convening and supporting Area Hubs in key areas of Sheffield. The lead hub partner will coordinate activity to develop trust, build local multi-agency relationships and deliver youth-led community development.

Why is the SY-NC project needed?

Increasing numbers of children, young people and families within our city are adversely affected by high levels of poverty, serious violence, school exclusions, mental health issues, exploitation and offending, in many ways driven by inequality in the city.

Given the scale and complexity of issues that young people are facing, there is a need and an opportunity to collaborate across both statutory and community partners to develop shared purpose and approaches to working with young people in their communities.

Consultation with South Yorkshire Police and other statutory partners has enabled SY-NC to identify areas of the city where young people are most acutely affected by crime, multiple deprivation and as a result, exploitation. SY-NC have explored definitions of exploitation and would like the work to be open to community interpretation of what types of exploitation exist for its residents. SY-NC would also like to include adults in the work and perspectives from multiple groups within a community.

What we believe:

What are the principles that underpin this work?

To create equity, we must place people at the heart of change. Young people, their families and communities thrive when they're empowered to make their own choices and decisions.

People should be able to control and use their own assets and insight to influence what happens in communities and therefore influence policy making and investment in the city.

Collaboration, sharing experiences and learning is key to our shared success. Coming together in hubs of groups and organisations and networks strengthens peoples' voices. And if we join things up, we discover the abundance of talent, skill, experience and opportunity.

Children and young people are our leaders. When we channel their ability to dream and create new, we can create change worthy of their future. We can learn from young people in this space to tackle the barriers they see and empower them to overcome them.

The SY-NC project has been developed, piloted and is led by the Voluntary and Community sector in Sheffield.

We will:

- Build community led local area partnerships in the areas where exploitation is highest, working with communities to understand and address local needs
- Involve young people meaningfully in the design and delivery of the local offer
- Provide training and development to the community-based workforce
- Provide training and development to young adults to develop a new layer of community workers and leaders
- Work in partnership with stakeholders across "the system" (including Council services, police, justice, health and VCF organisations) to improve outcomes for children, young people and families
- Ensure meaningful community input to citywide youth strategy.

Ambitious Legacy: we have shaped our thinking of the programme based on the formal and informal research of and feedback from many different partners. Please ask us if you would like to know more about the work completed to gain this funding and the work completed throughout the last year.

Children, young people and families will greatly benefit from community-based area hubs working with statutory and community voluntary sector organisations to create partnerships that reflect the concerns and ideas of each neighbourhood. This in turn will influence the Citywide Strategic Board, giving young people and communities a real voice and influence in the development of approaches to issues affecting them.

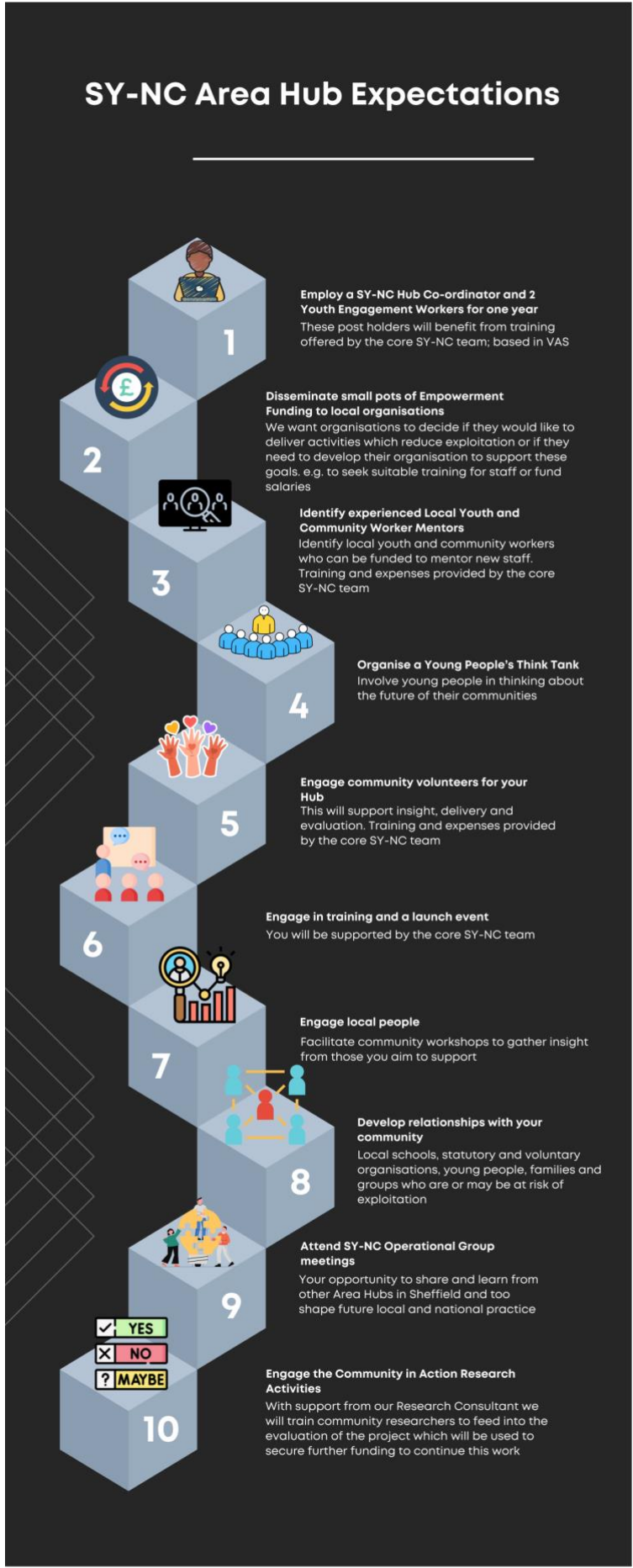
- **Children and young people:** participating in positive, meaningful activities that meet their needs and develop resilience; are empowered to use their voice to influence future development.
- **Partners:**
 - o Capacity building and developing new provision
 - o Developing long term relationships with both statutory and voluntary organisations
 - o Developing local partnerships Opportunities
- **Power:** strategic decision making and investment is influenced by the impact and learning of a community-led approach and the data and insight from communities

2. Introducing SY-NC Empowerment Fund and Area Hubs:

In 2023 SY-NC would like to fund activities which reduce exploitation and set up 3 Area Hubs to bring communities together. The areas we are prioritising are:

- Burngreave and Firth Park
- Darnall and Tinsley
- Manor and Arbourthorne
- Southey and Shiregreen
- Upperthorpe and Broomhall.

SY-NC Area Hub Expectations



1
Employ a SY-NC Hub Co-ordinator and 2 Youth Engagement Workers for one year
 These post holders will benefit from training offered by the core SY-NC team; based in VAS

2
Disseminate small pots of Empowerment Funding to local organisations
 We want organisations to decide if they would like to deliver activities which reduce exploitation or if they need to develop their organisation to support these goals. e.g. to seek suitable training for staff or fund salaries

3
Identify experienced Local Youth and Community Worker Mentors
 Identify local youth and community workers who can be funded to mentor new staff. Training and expenses provided by the core SY-NC team

4
Organise a Young People's Think Tank
 Involve young people in thinking about the future of their communities

5
Engage community volunteers for your Hub
 This will support insight, delivery and evaluation. Training and expenses provided by the core SY-NC team

6
Engage in training and a launch event
 You will be supported by the core SY-NC team

7
Engage local people
 Facilitate community workshops to gather insight from those you aim to support

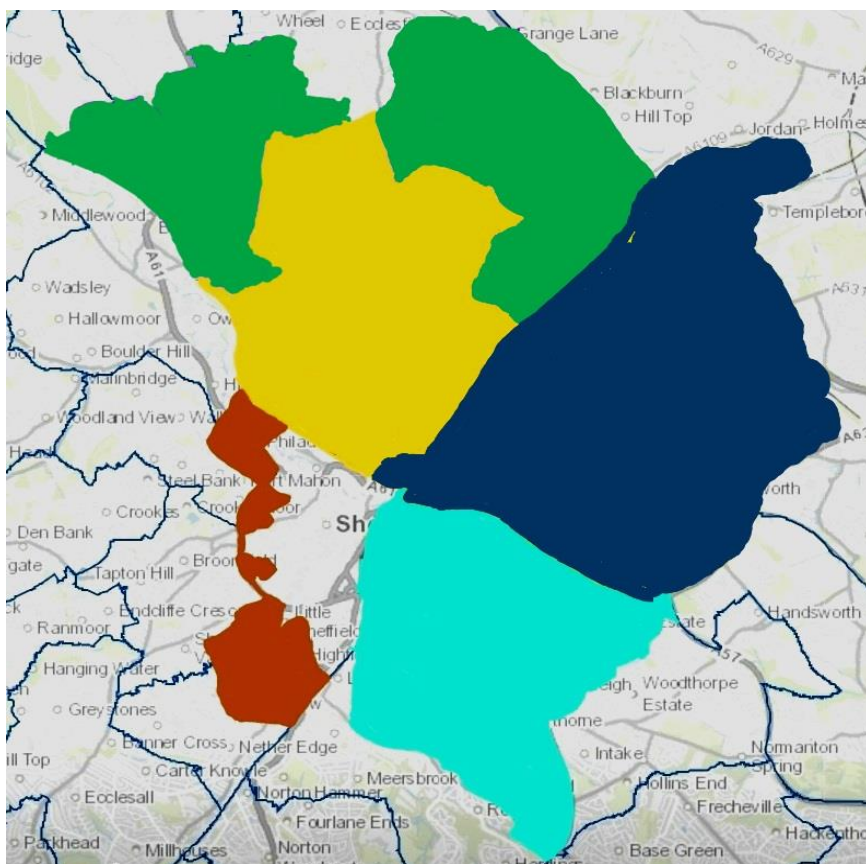
8
Develop relationships with your community
 Local schools, statutory and voluntary organisations, young people, families and groups who are or may be at risk of exploitation

9
Attend SY-NC Operational Group meetings
 Your opportunity to share and learn from other Area Hubs in Sheffield and too shape future local and national practice

10
Engage the Community in Action Research Activities
 With support from our Research Consultant we will train community researchers to feed into the evaluation of the project which will be used to secure further funding to continue this work

- YES
- NO
- MAYBE

The Area Hubs are being established to support the youth workforce and work directly with their community, with young people, children, parents/carers and local voluntary and statutory services to identify gaps in provision and make suggestions for how we can improve the services on offer.



Key to Areas:

- Green – Southey and Shiregreen**
- Yellow – Burngreave and Firth Park**
- Dark Blue – Darnall and Tinsley**
- Turquoise – Manor and Arbourthorne**
- Brown – Upperthorpe and Broomhall**

The SY-NC core team are sending out application forms for organisations to express an interest in becoming an Area Hub. Please refer to the Area Hub expectations above to establish if this is something you might be interested in and get in touch with us to discuss your interest or complete an application form and email it to us.

Shortly we will be launching SY-NC's Empowerment Fund to support organisations and exploited groups in these areas. We would encourage organisations to decide whether they would like to deliver activities which reduce exploitation or whether they need to develop their own organisation to support these goals in the future. Therefore, the fund may be used to deliver activities, seek suitable training for staff or fund salaries etc.

Area Hubs will disseminate the Empowerment Fund once they are established and in the meantime the process for disseminating the fund will fall to the SY-NC Steering Group.

Empowerment Fund Outcomes:

- Engage young people and community members in co-production of meaningful and relevant projects and activities;
- Support representation of local partnerships at the citywide Sheffield Youth Strategic Board strategic level, giving communities a strong and coherent voice;
- Engage with local and citywide partners in the statutory and community sectors to deliver tailored support to young people and families within communities;
- Work with the local community workforce, young people and community members to identify and address training and development needs;
- Build the capacity and confidence of the community workforce through learning and development opportunities including networking, mentoring and knowledge transfer;
- Carry out participatory action research to ensure that activities are evaluated, measured for impact, research informed and flexible/responsive;
- Develop a new generation of community workers, leaders and activists through access to training, peer mentors, role models and support to overcome barriers and change mind-sets.

Further information about Empowerment Funding, applications and funding limits will be released in due course.

3. SY-NC Context and Approach:

- Bringing people together and building strong relationships

Bringing people together is at the heart of the partnership. The SY-NC Area Hubs will focus on engaging young people and community members and providing development tools (e.g., training, mentoring, networking) that will enable them to co-produce meaningful local projects and activities. We recognise and draw on the expertise of

young people and young adults with lived experience of the issues affecting our communities to build their confidence and ability to lead, support and empower others, together with access to the resources needed to make activities happen. Through the Area Hubs young people and community members will have opportunities to engage with other local and citywide providers, including statutory services such as police, health, education and Council teams, local businesses and VCF organisations, building more trusting relationships, identifying common interests and enabling partnership working.

- Improving places and spaces belonging to communities

Too many of our community places and spaces feel inaccessible to young people and community members, for various reasons, including being unaffordable, feeling unsafe or perceived territorial boundaries. SY-NC projects will tackle this inaccessibility by making use of our community assets. We will involve young people and community members by encouraging a sense of ownership of community spaces, identifying what improvements are needed and taking action to achieve them. This may be through activities such as clean-ups and projects to enhance existing spaces, or by participating in planning and decision-making through the area partnerships.

- Enabling more people to reach their full potential by working to address issues at the earliest stage

We envisage that a range of SY-NC projects will support positive parenting, physical, emotional and mental health, education and skills development, and a sense of community spirit and citizenship, that will give our young people a good start in life and learning and capacity building opportunities throughout their youth.

However, we also recognise that a significant number of young people and young adults are already affected by issues including criminal exploitation and gangs, and SY-NC will also aim to develop projects that will provide keyworker support and improved pathways into stable lifestyles. We believe that peer-led approaches, engaging young people and adults who have turned their lives around to support and mentor those who are at risk, have the most meaningful and effective impact.

By addressing the issues affecting young people now and developing mentors and role models for the future, in the longer term we aim to enable a shift in mainstream funding towards prevention and early help interventions.

4. Timescale:

Area Hub application deadline – 17 February 2023
Response from SY-NC by 10 March 2023
Rolling application deadline for Empowerment Fund
Work to be completed by December 2023

5. Research Model:

SY-NC includes a research element, training our youth engagement workers to carry out participative action research projects in each community, involving ongoing consultation, evaluation and impact monitoring. Local engagement workers will develop action research projects specific to each place, with the support and guidance of a research consultant. These projects will identify local problems and assets, collect data and monitor how interventions are working, with the results going through an iterative process of defining research questions and exploring themes that emerge. The engagement workers will act as a communications pathway between community members and area partnerships to enable strategic decision making, with data and findings being fed back into communities as well as to citywide strategy. The research programme will operate on the principle that research must be carried out with and not on communities, enabling communities to develop their own local solutions and assets.

We are keen to share learning from the programme with wider research networks including those led by funders, universities and community practitioners, as well as with local partners.